

---

---

## Pantera Electronics LED FootWell Lamp Installation Manual

---

---

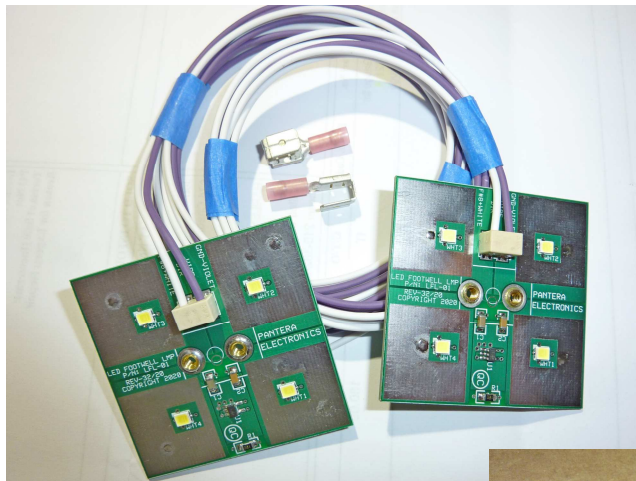
This installation manual is to assist in the installation of Pantera-Electronics LED Footwell Lamp. The LED Footwell Lamp is to provide additional lighting on the floor area both both occupants.

It utilizes 4 high power white LEDs the produce a total of 275 lumens of light. Minimal heat generated by the LED Footwell Lamp and will not damage anything near the mounting area.

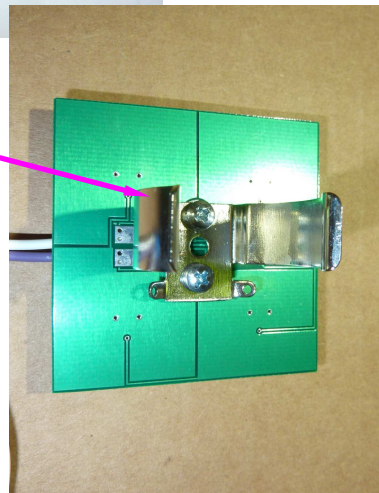
The spring clip on the backside of the LED array is designed to fit on the vertical drain tube on each side the the body.

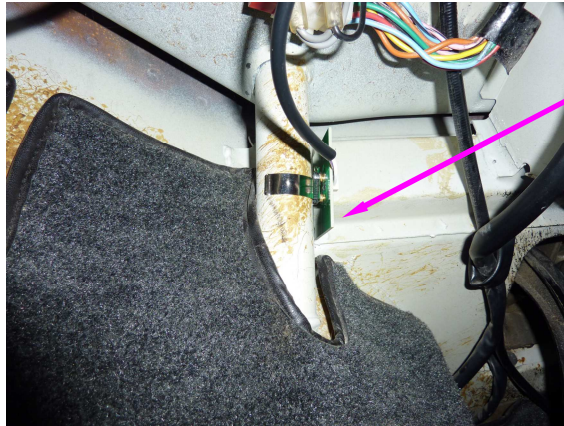
There are 2 wires that are long enough to connect to the courtesy light rocker switch and fuse panel.

The LED Footwell Lamp can be connected to the OEM factory courtesy rocker switch or the Pantera Electronics courtesy rocker switch or the PE Console Switch Controller.



Spring clip





Install the LED Footwell Lamp on the drivers side drain tube by just pressing in place. The LED Footwell Lamp can be rotated around the drain tube for best lighting effect.

Route the VIOLET wire from the LED Footwell Lamp to the courtesy light switch.

Feed the WHITE wire from the LED Footwell Lamp to the fuse panel.

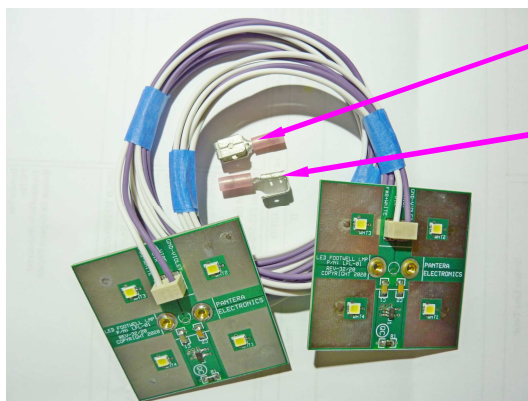
Mount the LED Footwell Lamp on the passenger side drain tube in the same manor.

Route the VIOLET wire from the LED Footwell Lamp to the courtesy light switch.

Feed the WHITE wire from the LED Footwell Lamp to the fuse panel.

*Note if installing with a Pantera Electronics rocker switch, both wires should be routed to the courtesy switch. See page 4.*

*Note if installing with a Pantera Electronics rocker switch, both wires should be routed to the courtesy switch. See page 4.*

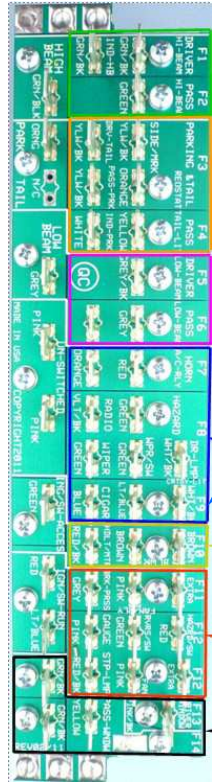
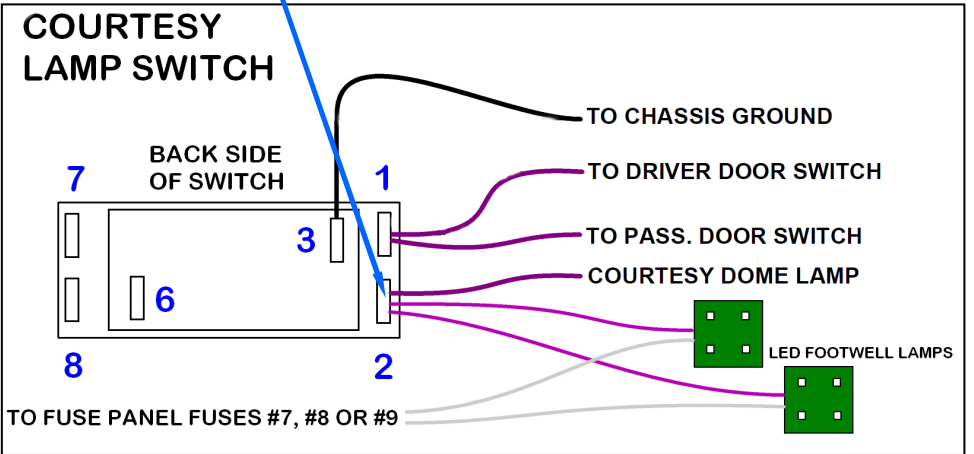


There are 2 piggy back terminals provided to connect the LED Footwell Lamps to the courtesy light switch and the fuse panel.

At the courtesy light switch, crimp both VIOLET LED Footwell Lamp wires in one piggyback terminal.

Remove the factory terminal with a single violet from switch terminal #2 and insert the terminal with the VIOLET LED Footwell Lamp wires on the same terminal.

Then replace the original terminal on the piggy back terminal.



At the fuse panel, crimp both WHITE LED Footwell Lamp wires in one piggyback terminal.

Remove the factory terminal with a WHITE/BLACK from fuse panel, Fuses #7 #8 or #9.

Insert the terminal with the WHITE LED Footwell Lamp wires on the same terminal.

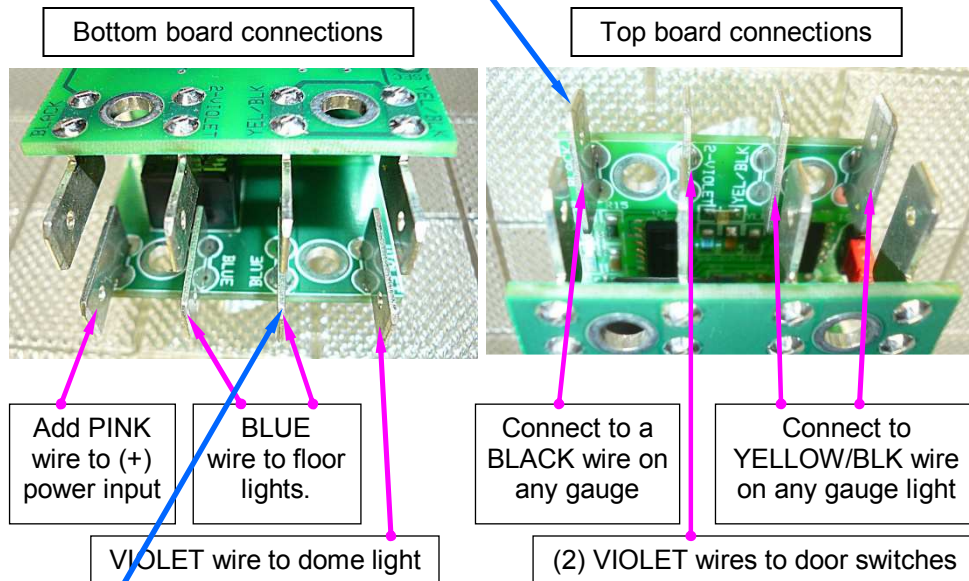
Then replace the original terminal on the piggy back terminal.

**Pantera Electronics Courtesy Switch connections for LED Footwell Lamp**

At the PE courtesy light switch, crimp both VIOLET LED Footwell Lamp wires in one piggyback terminal.

Remove the factory terminal from the switch terminal labeled "BLACK" and insert the terminal with the VIOLET LED Footwell Lamp wires on that terminal.

Then replace the original terminal on the piggy back terminal.



At the PE courtesy light switch, crimp both WHITE LED Footwell Lamp wires in one piggyback terminal.

Insert the piggyback terminal on the tab labeled "BLUE"

**NOTE:** It's important to keep this installation manual for future reference since revisions to this product change the contents of the installation manual.

Disclaimer

The products from Pantera Electronics have been design and manufactured with the best quality components known to the engineer. The installation instructions have been written to assist the owner in the proper use and installation of the products. Pantera Electronics can not be held responsible or held liable for the interpretation or incorrect implementation of the products.